

Kaiser Reef Limited

ASX: KAU

Shares on Issue
33,450,001

Directors & Management

Chairman
Adrian Byass

Executive Director
Jonathan Downes

**Non Executive Director &
Company Secretary**
David Palumbo

Principal Place of Business
Unit 3, Churchill Court
335 Hay Street
Subiaco WA 6008

Registered Office
Level 11
216 St Georges Terrace
Perth WA 6000

T 08 9481 0389
E admin@kaiserreef.com.au
W kaiserreef.com.au

6 April 2020

Company Announcements

Australian Securities Exchange
Level 40, Central Park,
152-158 St Georges Terrace
PERTH WA 6000

High Resolution Aeromagnetic and Radiometric Survey Commences and Leading Geophysical Consultancy Firm Appointed

Kaiser Reef Limited (ASX: KAU) (**Kaiser** or the **Company**) is pleased to announce that it has appointed the services of Resource Potentials Pty Ltd to assess in detail the project areas and target bulk tonnage gold mineralisation within Kaiser tenure. Resource Potentials is a leading consulting and contracting business specialising in geophysical survey design, acquisition, processing, modelling, inversion, data integration, interpretation and drill hole targeting. Resource Potentials is highly experienced in processing, interpreting and modelling potential field (magnetic and gravity) and other geophysical surveys such as radiometrics, EM, IP, GPR and seismic data in a variety of geological settings for a range of commodities and have been working in the immediate area on similar tasks for an extended period.

Kaiser has also commenced a large-scale, high resolution airborne magnetic and radiometric survey of the project areas (Figure 1). This an important first step in properly exploring the project areas for prospective gold mineralisation and drill hole targeting as prior available data could not provide support for the proposed drilling to a level KAU required.

One of the models based on prior geophysical data and interpretations sought to explain the large number of historic gold mines is that they are originally sourced and migrated from underlying felsic intrusive and porphyry style mineralised bodies. These intrusive bodies are typically structurally controlled and emplaced in compromised host rocks. The magnetic survey is

considered to be the best tool to identify the underlying structures. In addition, the radiometric survey will assist in mapping outcropping rock types and alteration which will also assist in targeting certain types of mineralisation. For example, as certain hot intrusive rocks force themselves into surrounding host rocks, they can also alter the makeup or mineralogy of the surround rocks as the bring in hot fluids that may be chemically different. Radiometric information from this survey may assist in identifying these halos or evidence of alteration which could assist in targeting underlying intrusive units.

Of course, the large scale of gold, arsenic and antimony detailed in the previously released soil sampling results and various ground mapping will also be invaluable.

The airborne survey is expected to take only a few days and once the data has been processed, the targeting and interpretation of the results, with the assistance of Resource Potentials, will be released and form the basis of the drill planning.

Kaiser is aware that the COVID-19 Pandemic may slow down some exploration activities but at this stage it appears that key activities are able to continue. The Company's priority is to ensure the health and safety of its employees, agents and other contractors and the wider community.

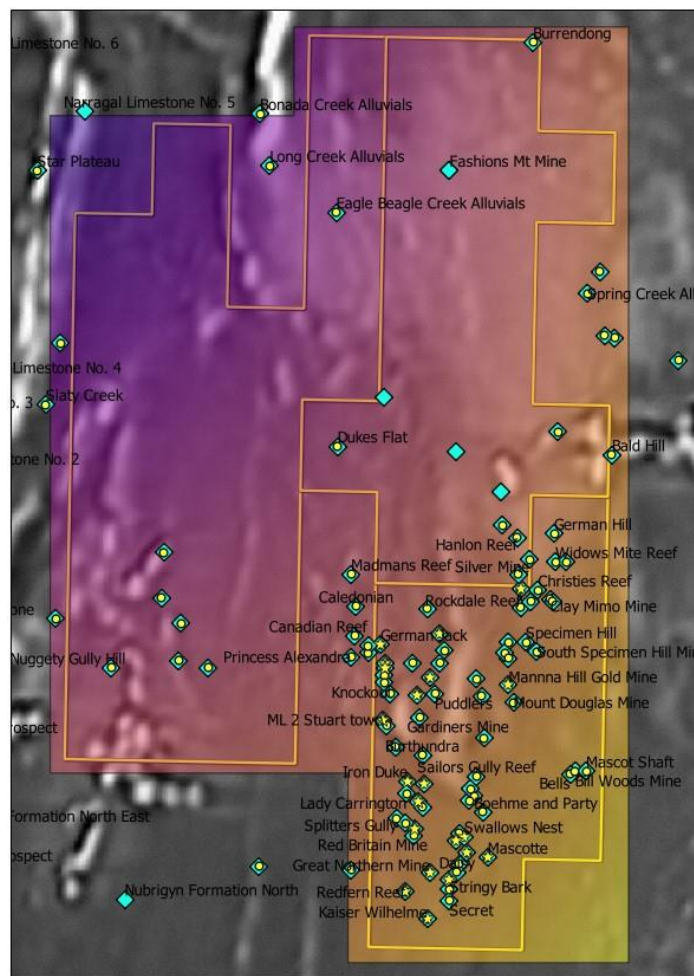
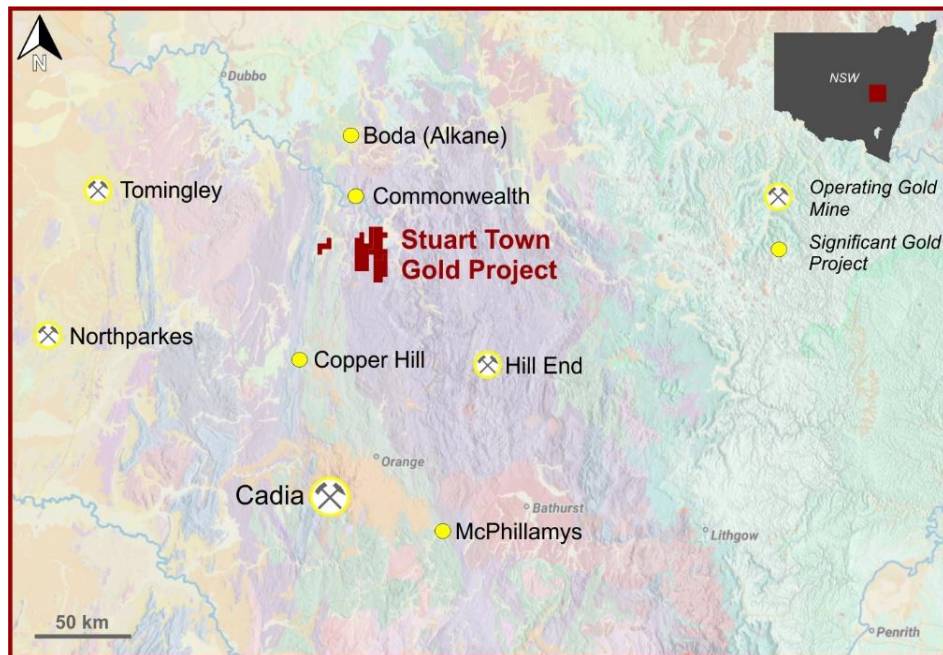


Figure 1: Proposed area of the airborne survey (coloured polygon), over Kaiser tenements (yellow outlines) and historic gold mines over historic low-resolution airborne magnetic image

About Kaiser

The New South Wales Lachlan Fold Belt is an extensive and prospective geological unit that is currently enjoying an exploration renaissance. Kaiser considers that the wholly owned Stuart Town project located between Cadia and Alkane's new gold discovery – the Boda project, and within the Lachlan Fold Belt is highly prospective (Figure 2). The view that the project is prospective for gold is supported by the extensive number of historic gold mines located in the region.



Stuart Town Gold Project location in New South Wales.

For further information please contact: admin@kaiserreef.com.au

Authorised by:
Jonathan Downes
Executive Director